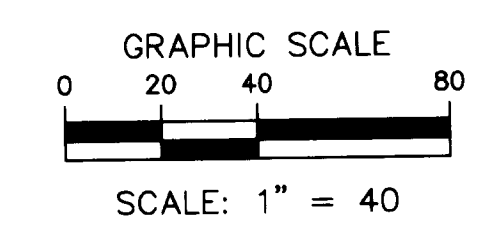
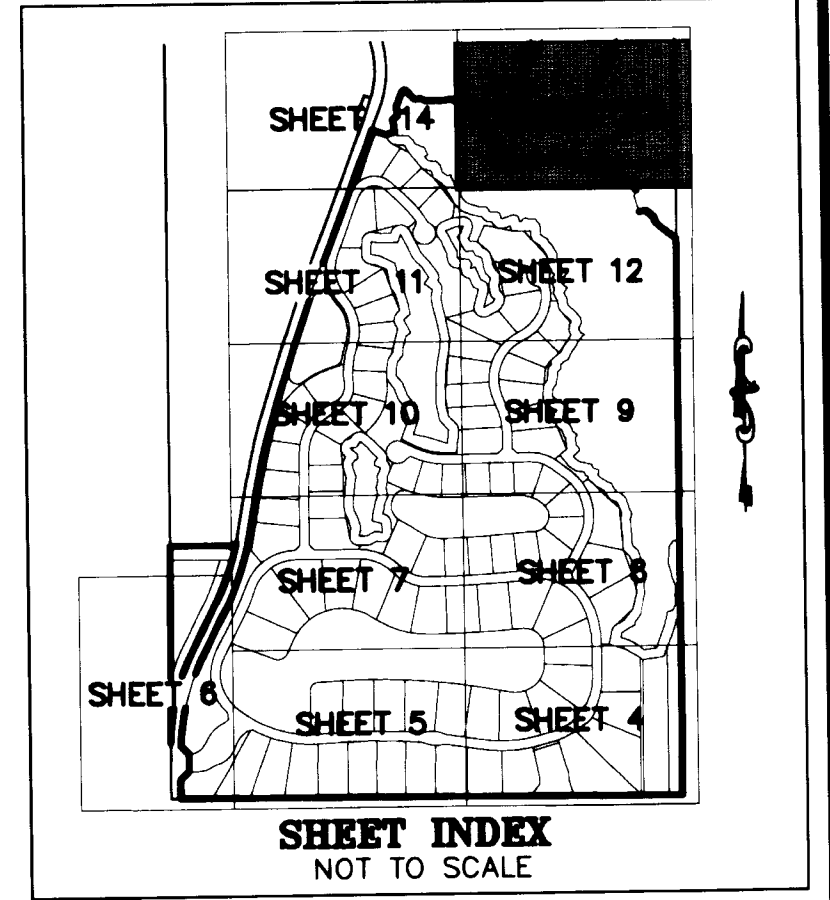


# PENNOCK PRESERVE PUD, PHASES 2 & 3

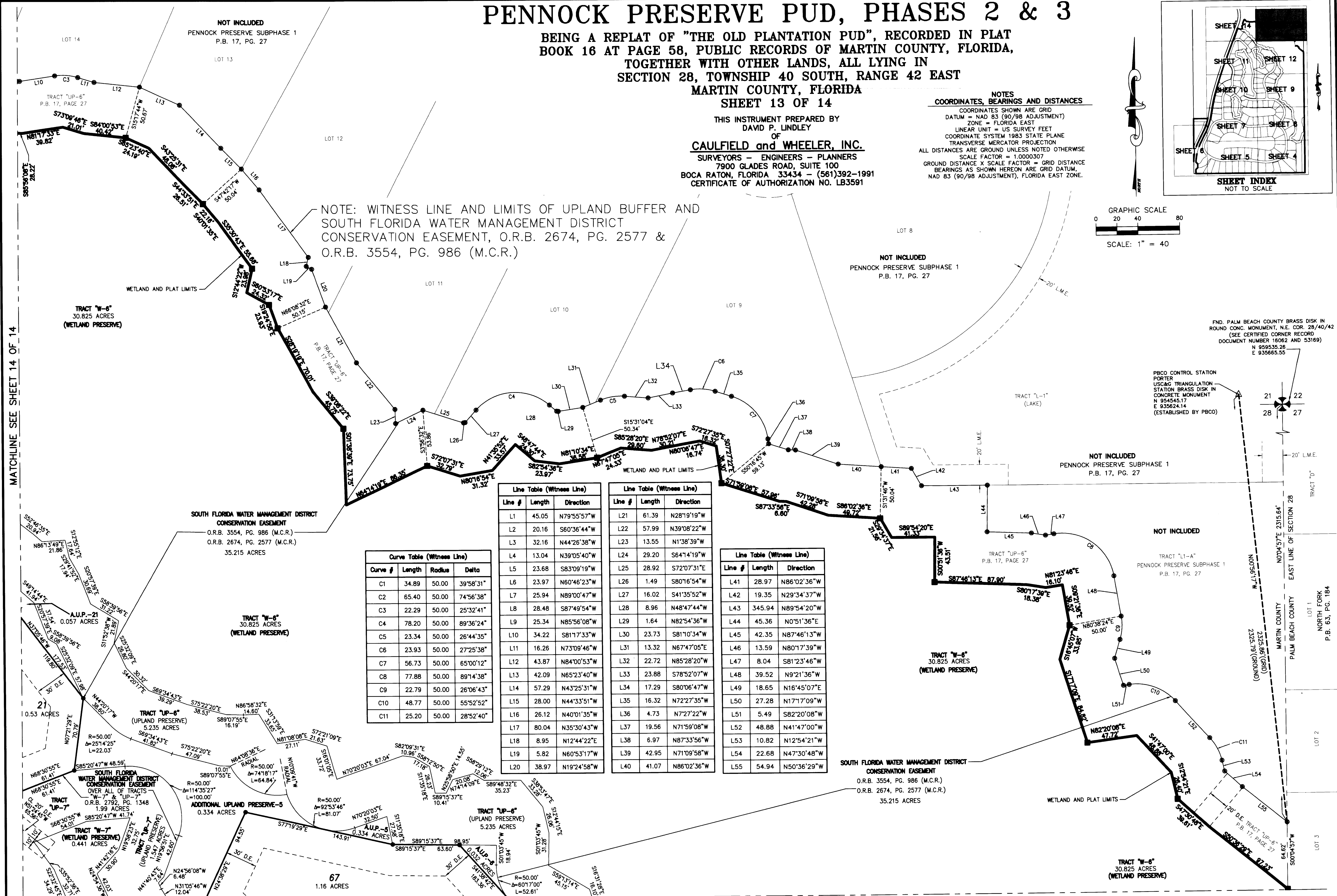
BEING A REPLAT OF "THE OLD PLANTATION PUD", RECORDED IN PLAT BOOK 16 AT PAGE 58, PUBLIC RECORDS OF MARTIN COUNTY, FLORIDA, TOGETHER WITH OTHER LANDS, ALL LYING IN SECTION 28, TOWNSHIP 40 SOUTH, RANGE 42 EAST MARTIN COUNTY, FLORIDA SHEET 13 OF 14

THIS INSTRUMENT PREPARED BY DAVID P. LINDLEY OF CAULFIELD and WHEELER, INC. SURVEYORS - ENGINEERS - PLANNERS 7900 GLADES ROAD, SUITE 100 BOCA RATON, FLORIDA 33434 - (561)392-1991 CERTIFICATE OF AUTHORIZATION NO. LB3591

**NOTES**  
**COORDINATES, BEARINGS AND DISTANCES**  
 COORDINATES SHOWN ARE GRID  
 DATUM = NAD 83 (90/98 ADJUSTMENT)  
 ZONE = FLORIDA EAST  
 LINEAR UNIT = US SURVEY FEET  
 COORDINATE SYSTEM 1983 STATE PLANE  
 TRANSVERSE MERCATOR PROJECTION  
 ALL DISTANCES ARE GROUND UNLESS NOTED OTHERWISE  
 SCALE FACTOR = 1.000007  
 GROUND DISTANCE X SCALE FACTOR = GRID DISTANCE  
 BEARINGS AS SHOWN HEREON ARE GRID DATUM,  
 NAD 83 (90/98 ADJUSTMENT), FLORIDA EAST ZONE.



NOTE: WITNESS LINE AND LIMITS OF UPLAND BUFFER AND SOUTH FLORIDA WATER MANAGEMENT DISTRICT CONSERVATION EASEMENT, O.R.B. 2674, PG. 2577 & O.R.B. 3554, PG. 986 (M.C.R.)



**Curve Table (Witness Line)**

Curve #	Length	Radius	Delta
C1	34.89	50.00	39°58'31"
C2	65.40	50.00	74°56'38"
C3	22.29	50.00	25°32'41"
C4	78.20	50.00	89°36'24"
C5	23.34	50.00	26°44'35"
C6	23.93	50.00	27°25'38"
C7	56.73	50.00	65°00'12"
C8	77.88	50.00	89°14'38"
C9	22.79	50.00	26°06'43"
C10	48.77	50.00	55°52'52"
C11	25.20	50.00	28°52'40"

**Line Table (Witness Line)**

Line #	Length	Direction
L1	45.05	N79°55'57"W
L2	20.16	S60°36'44"W
L3	32.16	N44°26'38"W
L4	13.04	N39°05'40"W
L5	23.68	S83°09'19"W
L6	23.97	N60°46'23"W
L7	25.94	N89°00'47"W
L8	28.48	S87°49'54"W
L9	25.34	N85°56'08"W
L10	34.22	S81°17'33"W
L11	16.26	N73°09'46"W
L12	43.87	N84°00'53"W
L13	42.09	N65°23'40"W
L14	57.29	N43°25'31"W
L15	28.00	N44°33'51"W
L16	26.12	N40°01'35"W
L17	80.04	N35°30'43"W
L18	8.95	N12°44'22"E
L19	5.82	N60°53'17"W
L20	38.97	N19°24'58"W

**Line Table (Witness Line)**

Line #	Length	Direction
L21	61.39	N28°19'19"W
L22	57.99	N39°08'22"W
L23	13.55	N1°38'39"W
L24	29.20	S64°14'19"W
L25	28.92	S72°07'31"E
L26	1.49	S80°16'54"W
L27	16.02	S41°35'52"W
L28	8.96	N48°47'44"W
L29	1.64	N82°54'36"W
L30	23.73	S81°10'34"W
L31	13.32	N67°47'05"E
L32	22.72	N85°28'20"W
L33	23.88	S78°52'07"W
L34	17.29	S80°06'47"W
L35	16.32	N72°27'35"W
L36	4.73	N72°22"W
L37	19.56	N71°59'08"W
L38	6.97	N87°33'56"W
L39	42.95	N71°09'58"W
L40	41.07	N86°02'36"W

**Line Table (Witness Line)**

Line #	Length	Direction
L41	28.97	N86°02'36"W
L42	19.35	N29°34'37"W
L43	345.94	N89°54'20"W
L44	45.36	N0°51'36"E
L45	42.35	N87°46'13"W
L46	13.59	N80°17'39"W
L47	8.04	S81°23'46"W
L48	39.52	N9°21'36"W
L49	18.65	N16°45'07"E
L50	27.28	N17°17'09"W
L51	5.49	S82°20'08"W
L52	48.88	N41°47'00"W
L53	10.82	N12°54'21"W
L54	22.68	N47°30'48"W
L55	54.94	N50°36'29"W

MATCHLINE SEE SHEET 14 OF 14

MATCHLINE SEE SHEET 12 OF 14

FND. PALM BEACH COUNTY BRASS DISK IN ROUND CONC. MONUMENT, N.E. COR. 28/40/42 (SEE CERTIFIED CORNER RECORD DOCUMENT NUMBER 16062 AND 53169)  
 N 959535.26  
 E 935665.55

PBCO CONTROL STATION PORTER US&C TRIANGULATION STATION BRASS DISK IN CONCRETE MONUMENT N 954545.17 E 935624.14 (ESTABLISHED BY PBCO)

MARTIN COUNTY NORTH FORK P.B. 63, PG. 184

LOT 1

LOT 2

LOT 3